



[www.customcargrills.com](http://www.customcargrills.com)  
[info@customcargrills.com](mailto:info@customcargrills.com)

customcargrills.com LLC  
PO Box 90004  
Grand Rapids, MI 49509  
(616) 889-2985

Year: 1995-99  
Make: Dodge  
Model: Neon

## INSTALLATION INSTRUCTIONS



**What's in the Box:** (2) Mesh Grill Inserts.

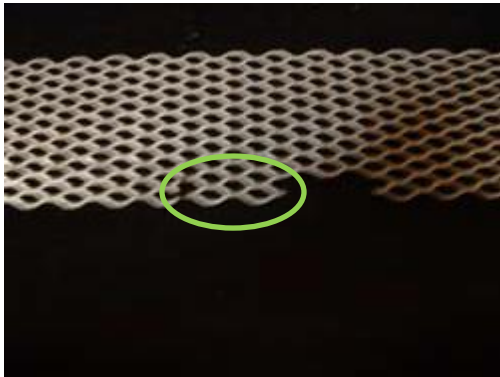


**Tool List:** Needle nose pliers.

### Grill Mesh Installation:

#### 1. Assembly

a. Locate the clip points. . Each of the four sections has two diamonds and cut next to them like the green circled area.



b. Hook the two prongs on the clip around the diamonds and tighten down like so.



c. Then tighten down the back part of the clip. If you do not tighten down enough, the clip will not hold well on the bumper. If you tighten down too much, it may be difficult to install.



d. Repeat for other clip areas.

2. Orient your inserts with the silver tabs to the bottom.

3. Take one of the inserts and put it behind the existing opening.

4. Center the insert so that it covers all of the opening and press forward on the silver tabs in a way that they clip onto the existing grill.
5. Repeat for other side and then test their strength by gently tapping on the grill to ensure it is on correctly.
6. If they do not seem to be secure please use either wire ties or metal wire to wrap around the vertical pole and slide through the insert to secure it to the car.



Clips

PLEASE NOTE: The instructions provided are the suggested installation method. If you feel that the installation instructions are inadequate or unsafe then please feel free to develop your own installation techniques that fit your exact needs. customcargrills.com llc is not liable for any personal or property damage resulting from our products. If you have any suggestions on how to improve our installation instructions then please email your comments to [info@customcargrills.com](mailto:info@customcargrills.com) .